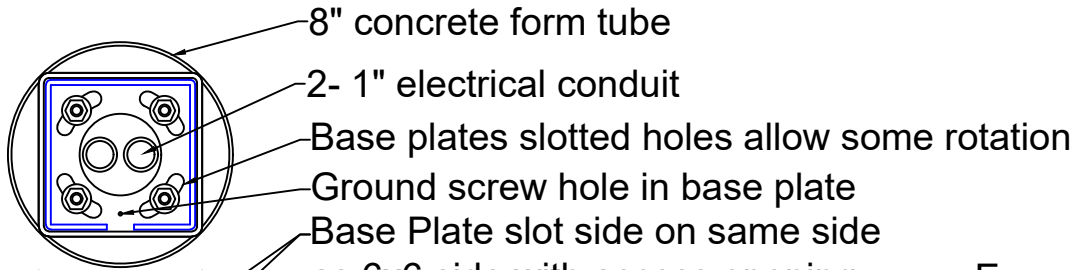


Looking down - 3" hole for 1" conduit in & out



8" concrete form tube

2- 1" electrical conduit

Base plates slotted holes allow some rotation

Ground screw hole in base plate

Base Plate slot side on same side as 6x6 side with access opening

Set Screws (2 pairs) secure 6x6 bollard body on base plate tabs

6"

1 1/2" 2"

Soil 1" below top of concrete pier

6x6 Bollard
Concrete
Pier depth
varies with
local
conditions
24" av.

8"

Check level between washers on all 4 bolts with a short level

* ATTRACTION LIGHTS DOES NOT SUPPLY FITTINGS FOR 120 VOLT OPTION

* THIS PLAN IS A GENERAL RECOMMENDATION ONLY- ADJUST TO LOCAL ELECTRICAL CODES

Attraction Lights, LLC

6x6 Bollard Base Plate Install

- 120 Volt option - 3" base plate hole

www.AttractionLights.com

? Call Lyle - 970-316-0019

Lyle@attractionlights.com

Expanded View

Adjust nuts w/ 3/4" open end wrench to level base plate & plumb light

Base plate tabs, 3/16" thick

Nut 1/2" dip galvanized

Small washer, or no washer

Steel base plate, 1/4" thick

- 6x6 fixture sits on top

Large washer

Concrete pier surface

Nut secured template

- Stays in the concrete

Electrical "L" - 1" PVC for power supply

Anchor bolts

- 1/2x8" dip galvanized