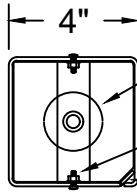
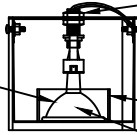


**Top view
4x4 Series**



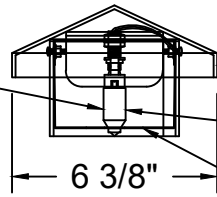
- #4 - Stainless steel top enclosure plate** protects lamp in 4x4 top
 - Plate hangs from 2 screws with flange nuts (#10 x 24 x 1/2")
 - Remove knockout ring (1.80") for MR16 lamps. The 5/8" hole is for G4 bipin lamps
- #5A - Stainless steel socket bracket supports socket assembly with LED bipin lamp**
 - Install Attraction Lights recommended LED lamps for best shadow pattern lighting
 - Socket lead wires routed thru lamp rod, into wire way or wire pipe, and out 4x4 base
 - Bracket slot ends rest on same 2 screws with flange nuts supporting the top enclosure plate

**MR16 Lamp
4x4x37"
4x4x25"
4x4x17"**



- #5B - Socket assembly adjustable for best area lighting and to avoid glare**
- Adjustment options:**
 - Rotate threaded lamp rod threaded into ceramic socket support bracket
 - Move nuts on lamp rod and re-secure on socket bracket spanning top of 4x4
 - Fine tune position by bending socket bracket
- Option:** MR16 enclosure ring rests on top enclosure plate - provided by request only
- This option is only needed if you need to raise the MR16 lamp to avoid glare

**G4 Bipin
Lamp
4x4x25"
4x4x17"**



View turned 90 degrees

- MR16 LED Lamp mounting:** Lamp typically rests in top enclosure plate 1.80" hole
- Raise lamp/socket to avoid glare
- #7A - 6" Cap** with bracket welded on underside to secure and center cap on 4x4
 - Set screw pushes against cap bracket to secure - see #7B below
- G4 bipin LED lamp mounting:** Adjust tip of LED lamp to be just above 4x4 design space
- Lamp nose typically sits in 5/8" hole in top enclosure plate
- Raise lamp/socket to avoid glare
- Top enclosure plate protects LED lamp - see #4 above

Quick Steps:

1. Install stake
2. Slide false bottom plate set into 4x4 base
3. Set 4x4 on stake
4. Install top enclosure plate
5. Install socket assembly with LED lamp
6. Make wire connections to power
7. Set cap



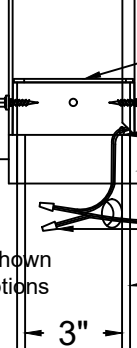
- #7B - Set screw** (1 - 1/4x20x3/8") secures cap on 4x4 by pushing against cap bracket
- Easiest to start set screw before setting cap
- Hex key (1/8") supplied

Design Space



* Keep soil level below steel fixture OR Lifetime Guarantee is void

* Standard stake mount shown - Surface & pier mount options available



4x4 Series Installation Guide

- Download/View pdf on website's Resources page - Installation Guides - 4x4 Series
- Attraction Lights, LLC - 970-316-0019**
- AttractionLights.com - info@AttractionLights.com**
- New for 2020 - 4x4 Series: Square fixtures formed from 12 gauge steel (1/8")
- Standard heights: 4x4x17", 4x4x25", 4x4x37"
- Weathered steel finish standard: Powder coat over zinc plating options
- Stake/Ground mount standard:
- Surface mount or concrete pier mount options available by request

- #2 - False bottom plate** hides ABS coupling and wire connections
- Hex screws (4 - 1/4"x1" self tapping) secure 4x4 fixture to coupling - installed before shipping
- Use 1/4" socket to remove if needed
- #6A - NEW - Wires can enter 4x4 base** thru 1/4" hole so wires not visible below 4x4 corner
- #3 - Coupling fits over pipe stake** - milled 3" ABS plastic coupling
- Glue ABS pipe into coupling for added stability. Use ABS pipe cement (not supplied)
- #6B - Wire connections** housed in pipe stake for protection
- #1 - Pipe stake** - 3" x 12-15" pipe stake - ABS plastic
- Note: The top of stake will be at same level as 4x4 fixture base after installed
- Stake end with 2 holes typically installed down
- Backfill stake hole with concrete for added security and stability