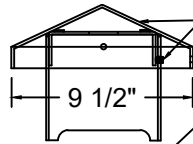
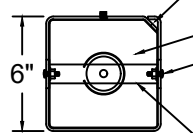


**6x6x42" & 6x6x34"**  
**- 12 Volt Top View:**  
 Cap set up



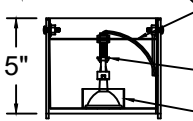
- 8. Cap (9") set screw in 6x6 pushes on bracket on cap underside
- Set screw (1 - 5/16" x 1/2") - use 5/32" hex key supplied
- Access set screw thru hole in cap rim, and check cap is centered
- Maintenance: lubricate set screw threads at cap removal

**Top Inside View:**  
 (Looking down)  
 Top enclosure plate & socket bracket shown



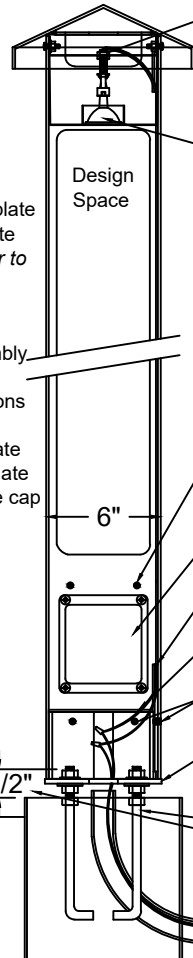
- Wireway formed into 6x6 corner (new for 2021)
- Route socket lead wires to base for connection to power supply
- 4. Top enclosure plate (stainless steel) with MR16 lamp enclosure
- Philips screws with flange nuts support (2 each - 1/4" screw + nut)
- Hardware passes thru holes (2) near top of 6x6 on opposite sides
- Hardware also secures socket assembly bracket

**Top Inside View:**  
 Top enclosure plate, socket assembly, MR16 lamp added



- 5. Socket assembly bracket (stainless steel)
- Philips screws with flange nuts secure (see top enclosure plate)
- 5. Socket assembly with 5 foot lead wires mounted in 6x6 top
- 4. Top enclosure plate (stainless steel) with MR16 lamp enclosure
- See details above

**Overall View:**  
 All components shown



- 5. Socket assembly adjustable for ideal lamp height
- Socket (with LED lamp) height adjustment options:**
- Rotate threaded lamp rod holding socket or change rod length
- Move nuts on lamp rod and re-secure to bracket
- Bend socket mounting bracket slightly
- MR16 lamp - LED 12 volt standard
- Set lamp on top enclosure plate for maximum area lighting, or raise lamp/socket to eliminate glare
- Use our recommended MR16 lamps for best shadow pattern lighting (single diode) and area lighting (wide beam angle)

- Quick Install Steps:**
1. Install concrete pier
  2. Set and level base plate
  3. Set 6x6 on base plate
  - You may find it easier to do #4 & #5 before #3
  4. Install top enclosure plate
  5. Install socket assembly with LED lamp
  6. Make wire connections to power in 6x6 base
  7. Add false bottom plate
  8. Add access cover plate
  9. Set, center & secure cap

**6x6 Series Install Guide: 6x6x42" & 6x6x34" - 12 Volt - MR16s**  
 Attraction Lights, LLC - 970-316-0019 - call with any questions  
 AttractionLights.com - info@AttractionLights.com  
 - Download and View this pdf on website's Resources page - Installation Guides - 6x6 Series - 12 Volt  
 - 6x6 Bollard part names underlined  
**- Also see Top 6x6 Details & Base 6x6 Details for more info**

\* Keep soil level below steel bollard OR the Lifetime Guarantee will be void

\* Standard 8" concrete pier shown - Hardware and template supplied

- Set screw holes (2 pairs = 4 - 5/16" x 1/2" opposite sides 6x6)
- Optional support for false bottom plate in line voltage applications with J box in the base. Set screws used as plugs for 12 volt apps.
- 8. Access cover plate covers 1 opening for base access
- Philips screws secure cover plate (4 black 1/4" x 1/2")
- 6. Lead wires from socket exit wireway above base plate
- Make up connects to power supply wires inside base plate
- 7. False bottom plate rests on base plate to cover wire connections
- Maintenance: remove debris
- 3. Set screws (2 pairs = 4 - 5/16" x 3/8") - use 5/32" hex key supplied
- Secure 6x6 bollard to base plate
- 2. Base plate secures and levels 6x6 bollard on pier
- Note: The "box" on the plate is not centered. Match the 2 sides with larger offset with 2 set screw sides of 6x6
- 1. Anchor bolts (dip gal. 1/2" x 8") & hardware in 8" pier
- Note: Approx. 1-1/2" bolt thread above concrete is needed to properly level base plate
- 12 volt power supply wires
- "L" electrical 1" conduit for power supply wires

1 1/2"

Soil level