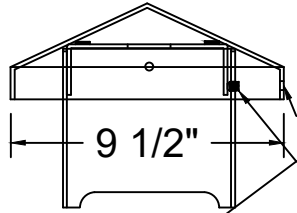


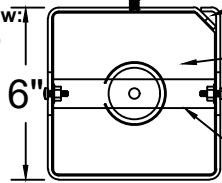
6x6x42" & 6x6x34" - 12 Volt
Detailed Top View:
 Cap set up



6x6 Install Guide: 12 Volt - 6x6x42" & 34" Top & Socket Details
 Attraction Lights, LLC - 970-316-0019 - call with any questions
 AttractionLights.com - info@AttractionLights.com
 - Download and View this pdf on website's Resources page -
 Installation Guides - 6x6 Series - 12 Volt
 - 6x6 Bollard part names underlined

- Access set screw thru hole in cap rim, and check cap is centered
- Cap (9") set screw in 6x6 top pushes on bracket on cap underside
- Set screw (1 - 5/16" x 1/2") - use 5/32" hex key supplied
- Maintenance: lubricate set screw threads at cap removal

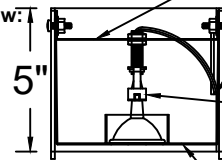
Top Inside View:
 (Looking down)
 Top enclosure
 plate & socket
 bracket shown



- Wireway formed into 6x6 corner (new for 2021)
- Route socket lead wires to base for connection to power supply
- Top enclosure plate (stainless steel) with MR16 lamp enclosure
- Philips screws with flange nuts support (2 each - 1/4" screw + nut)
- Hardware passes thru holes (2) near top of 6x6 on opposite sides
- Plate hangs from "legs" just above 6x6 design space
- Hardware also secures socket assembly bracket

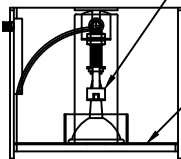
- Socket assembly bracket (stainless steel)
- Philips screws with flange nuts secure (see top enclosure plate)

Top Inside View:
 Top enclosure
 plate, socket
 assembly,
 MR16 lamp
 added



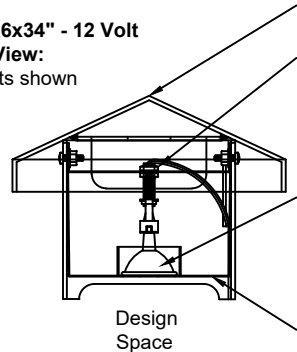
- Socket lead wires enter wire way in 6x6 corner
- Wires exit wire way opening above base base
- Socket assembly with 10 foot lead wires mounted in 6x6x80 top
- Socket with 3 foot lead wires used in 6x6x80 base (page bottom)
- See socket assembly below for lamp adjustment options

**Top Inside View
 rotated 90
 degrees**



- Top enclosure plate (stainless steel) with MR16 lamp enclosure
- Top plate can be customized for a variety of LED modules
- See details above

6x6x42" & 6x6x34" - 12 Volt
Overall Top View:
 All components shown



- Cap (9") with mounting bracket welded to underside
- Socket assembly adjustable for ideal lamp height
- **Socket (with LED lamp) height adjustment options:**
- Rotate threaded lamp rod holding socket or change rod length
- Move nuts on lamp rod and re-secure to bracket
- Bend socket mounting bracket slightly
- MR16 lamp - LED 12 volt standard
- Set lamp on top enclosure plate for maximum area lighting, or raise lamp/socket to eliminate glare
- Use our recommended MR16 lamps for best shadow pattern lighting (single diode) and area lighting (wide beam angle)
- Top enclosure plate protects LED lamp and provides fixed lamp mounting position

Design
 Space