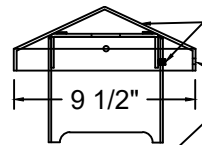


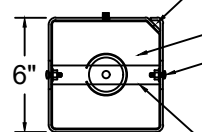
6x6x80" - 12 Volt

Top View:
Cap set up



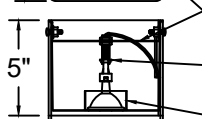
- 10. Cap (9") set screw in 6x6 pushes on bracket on cap underside
- Set screw (1 - 5/16" x 1/2") - use 5/32" hex key supplied
- Access set screw thru hole in cap rim, and check cap is centered
- Maintenance: lubricate set screw threads at cap removal

Top Inside View:
(Looking down)
Top enclosure plate & socket bracket shown



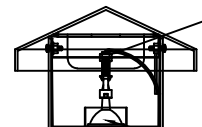
- Wireway formed into 6x6 corner (new for 2021)
- Route socket lead wires to base for connection to power supply
- 6. Top enclosure plate (stainless steel) with MR16 lamp enclosure
- Philips screws with *flange* nuts support (2 each - 1/4" screw + nut)
- Hardware passes thru holes (2) near top of 6x6 on opposite sides
- Hardware also secures socket assembly bracket

Top Inside View:
Top enclosure plate, socket assembly, MR16 lamp added



- 7. Socket assembly bracket (stainless steel)
- Philips screws with flange nuts secure (see top enclosure plate)
- 7. Socket assembly with 10 foot lead wires mounted in 6x6 top
- Socket with 3 foot lead wires used in 6x6 base
- 6. Top enclosure plate (stainless steel) with MR16 lamp enclosure
- See details above

Overall View:
All components shown



- 7. Socket assembly adjustable for ideal lamp height
- Socket (with LED lamp) height adjustment options:**
- Rotate threaded lamp rod holding socket or change rod length
- Move nuts on lamp rod and re-secure to bracket
- Bend socket mounting bracket slightly

Quick Install Steps:

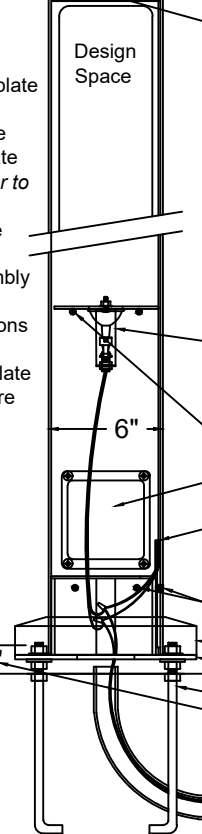
1. Install concrete pier
2. Set and level base plate
3. Set cover cap
4. Add up lighting plate
5. Set 6x6 on base plate
- You may find it easier to do #6 & #7 before #5
6. Install top enclosure plate
7. Install socket assembly with LED lamp
8. Make wire connections to power in 6x6 base
9. Add access cover plate
10. Set, center & secure cap

- MR16 lamp - LED 12 volt standard
- Set lamp on top enclosure plate for maximum area lighting, or raise lamp/socket to eliminate glare
- Use our recommended MR16 lamps for best shadow pattern lighting (single diode) and area lighting (wide beam angle)

6x6 Series Install Guide: 6x6x80" - 12 Volt - MR16 lamps
Attraction Lights, LLC - 970-316-0019 - call with any questions
AttractionLights.com - info@AttractionLights.com
- Download and View this pdf on website's Resources page - Installation Guides - 6x6 Series - 12 Volt
- 6x6 Bollard part names underlined
- **Also see: Concrete Pier Details & 6x6x80" Top Details**

* Keep soil level below steel bollard
OR the Lifetime Guarantee will be void

Soil level
* Standard 12" concrete pier shown - Hardware and template supplied



- 4. Up lighting socket assembly - 2nd lamp option in 6x6 base
- **Install plate with socket and lamp before setting 6x6 Bollard**
- Secure socket bracket to plate after adding lamp. Use Philips screws with *flange* nuts (2 each - 1/4" screw + nut)
- Set screws (2 pairs = 4 - 5/16" x 1/2" on opposite sides 6x6) support up lighting plate - slide angled plate past - then drop back
- Access cover plate covers 1 opening for base access
- Philips screws secure cover plate (4 black 1/4" x 1/2")
- Lead wires from top socket exit corner wireway above base plate
- Make up wire connections to power supply inside base plate
- Add in lead wires from up lighting socket assembly
- 5. Set screws (2 pairs = 4 - 5/16" x 3/8") - hex key (5/32") supplied
- Secure 6x6 bollard to base plate
- 3. Cover cap hides bolts - **Set this cap before wiring**
- 2. Base plate secures and levels 6x6 bollard on pier
- 1. Anchor bolts (dip gal. 1/2" x 10") & hardware in pier
- Note: Approx. 1-1/2" bolt thread above concrete is needed to properly level base plate
- 12 volt power supply wires
- "L" electrical 1" conduit for power supply wires