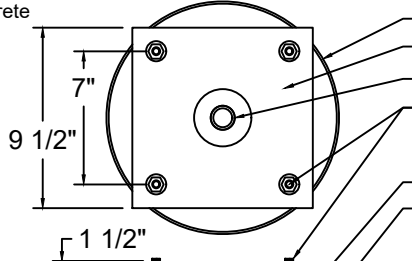


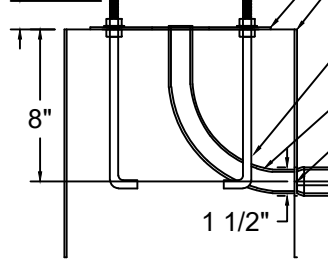
6x6x80"
12 Volt
Pier Top View:
12" concrete pier with template



6x6x80" - 12 Volt - 12" Concrete Pier - Template set up
Be careful to verify the intended final orientation of the 6x6x80" bollard prior to setting pier anchor bolts.

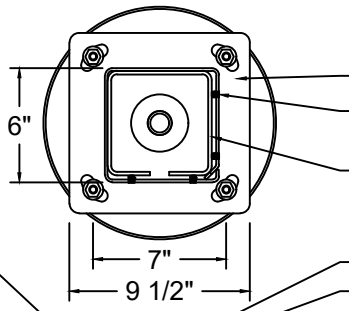
- 12" Concrete form tube
- Template: 1/8" hardboard
- "L" electrical 1" conduit
- Anchor bolts (dip gal. 1/2" x 10") & hardware in pier
- Note: Approx. 1-1/2" bolt thread above concrete is needed to properly level base plate
- Template: 1/8" hardboard
- Form tube length of 12" for finished pier top
- Pier depth varies with local conditions
- Average depth of 24-30"
- Watch for conflict between L conduit and anchor bolts
- Plan accordingly
- "L" electrical conduit (1") for power supply wires
- Cut 1.5" hole in form tube for "L" to exit - use hole saw
- Offset of 8" from top of form tube

Inside View:
12" concrete pier with template



Install Guide: 6x6x80" - 12 Volt - Concrete Pier Details
Attraction Lights, LLC - 970-316-0019 - call with questions
AttractionLights.com - info@AttractionLights.com
- Download and View pdf on website's Resources page - Installation Guides - 6x6 Series - 12 Volt
- 6x6 Bollard part names underlined

6x6x80"
12 Volt
Top View:
12" concrete pier with base plate installed

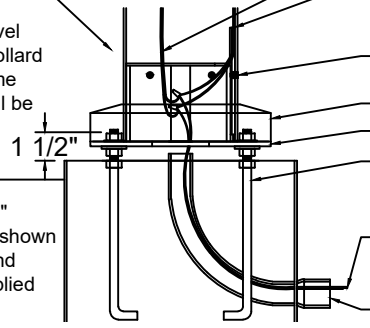


6x6x80" - 12 Volt - 12" Concrete Pier - Set base plate
Check level between 4 bolts with nuts and washers prior to setting base plate. Then confirm level of base plate after secured, and finally check the 6x6 bollard for plumb.

- Base plate leveled on and secured to anchor bolts
- 6x6 Bollards secured to base plate "box" with 4 set screws
- 5/16" x 3/8" set screws - use 5/32" hex key provided
- "Box" welded on base plate secures 6x6 bollards on pier

Overall View:
All components shown

* Keep soil level below steel bollard OR the Lifetime Guarantee will be void



* Standard 12" concrete pier shown - Hardware and template supplied

- Lead wires from up lighting socket assembly
- Lead wires from top socket exit corner wireway
- Make wire connections to power supply in base plate
- Add in lead wires from up lighting socket assembly
- Set screws (2 pairs = 4 - 5/16" x 3/8") -use hex key (5/32")
- Secure 6x6 bollard to base plate
- Cover cap hides bolts - **Set this cap before wiring**
- Base plate secures and levels 6x6 bollard on pier
- Anchor bolts (dip gal. 1/2" x 10") & hardware in pier
- Note: Approx. 1-1/2" bolt thread above concrete is needed to properly level base plate
- 12 volt power supply wires
- Option:** Line voltage wires connected to small weather-proof transformer in 6x6 base supplying 12 volt power.
- "L" electrical 1" conduit for power supply wires